

## Errata - "Concerning Montbretyl 12-Methyl Ether"

Robert Burnell, Sonia Desfossés, and Michel Jean

*J. Nat. Prod.*, **1993**, 56 (6), 984-984 • DOI:

10.1021/np50096a032 • Publication Date (Web): 01 July 2004

Downloaded from <http://pubs.acs.org> on April 4, 2009

### More About This Article

---

The permalink <http://dx.doi.org/10.1021/np50096a032> provides access to:

- Links to articles and content related to this article
- Copyright permission to reproduce figures and/or text from this article



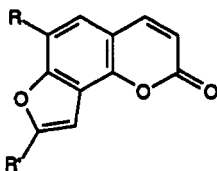
**ACS Publications**  
High quality. High impact.

Journal of Natural Products is published by the American Chemical Society, 1155 Sixteenth Street N.W., Washington, DC 20036

## ERRATA

For the paper by Burnell *et al.* entitled "Concerning Montbretyl 12-Methyl Ether," *J. Nat. Prod.*, **56**, 627 (1993), the plant source should be *Salvia montbretii* Benth. (Labiatae).

For the paper by Bilia *et al.* entitled "New Constituents from *Pyracantha coccinea* Leaves," *J. Nat. Prod.*, **55**, 1741 (1992), the structures on pages 1741 and 1742 are incorrect. They are as follows:



- 1 R = OMe, R' = OCH<sub>2</sub>CH=CMe<sub>2</sub>
- 2 R = OH, R' = OCH<sub>2</sub>CH=CMe<sub>2</sub>
- 3 R = OH, R' = H

